

# Metro IP

**Metro IP** is a reliable and secure service that provides multi-megabit Ethernet between offices within certain metropolitan city areas.

---



telecom<sup>nz</sup>

---

Wholesale



# Metro IP

---

Telecom Wholesale's Metro IP Ethernet access service (Metro IP) can be used to extend end users Local Area Network (LAN); link end-user sites within the same metropolitan areas; or, to provide remote hosted services that require large bandwidth connections.

The service extends end-users' networks between their buildings to their partners and suppliers using Ethernet technology.

## Benefits

Some of the benefits to service providers of Metro IP include:

- **lower cost of ownership** – the Ethernet technology eliminates the need for major hardware investment or training to offer the service to your end-users.
- **easy to install and manage** – the Ethernet technology in the end-user's LAN is the same as that used to deliver Metro IP.
- **flexible bandwidth** options to meet end-user's requirements and budgets.
- **scalability** – the underlying Ethernet access technology provides significant opportunities for growth.

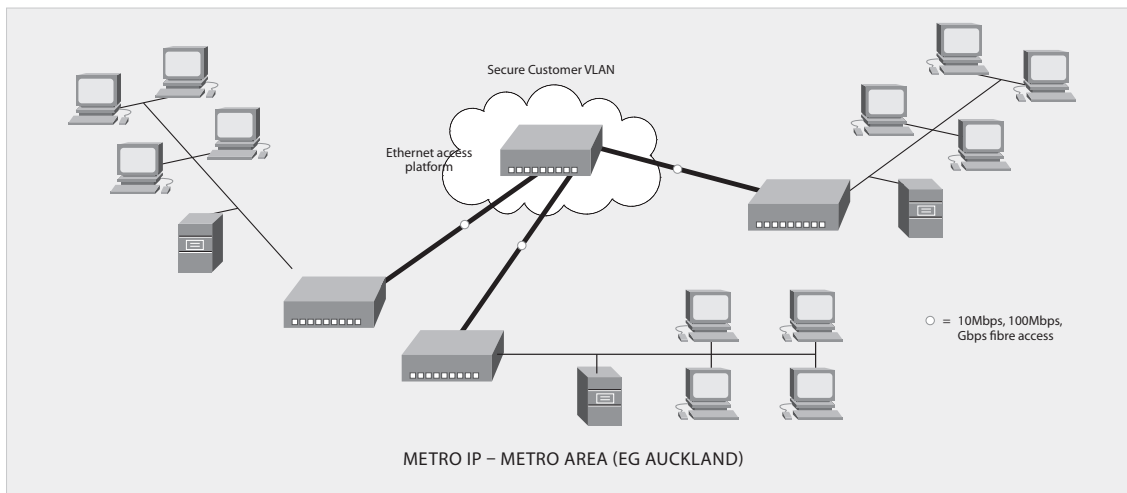
## How it works

Metro IP is a raw Ethernet product designed to be used by service providers who are building and managing their own networks. It provides Layer 2 bridged Ethernet connectivity between two or more customer sites within a single metropolitan area.

There are two components to the Metro IP service – an Ethernet access component, and a service or transmission component. Each is run at speeds of 10Mbit/s, 100Mbit/s and 1Gbit/s. End-users must purchase one of each for each site. They are not required to run at the same speed and this can be customised to suit end-user's requirements.

End-user's LAN traffic is carried across the Ethernet access onto Telecom's Secure Ethernet Access Platform. Virtual LAN (VLAN) technology is used to aggregate all the accesses across a metropolitan area and provides end-user segmentation.

# Metro IP



## Availability

Metro IP provides high speed connections between two or more end user sites within the metropolitan boundaries of Auckland, Hamilton, Palmerston North, Wellington, Christchurch and Dunedin. The service is offered at speeds of 10Mbit/s, 100Mbit/s and 1Gbit/s and provides a transparent Ethernet path between sites.

## Requirements

Physical interface to the customer is an RJ45 Ethernet socket. The service only accepts basic Ethernet frames and VLAN tags but not 802.1p.



---

## Wholesale

Telecom Wholesale is an operationally separate business unit within Telecom that wholesales network connectivity products to internet and telephone service providers throughout New Zealand. Telecom Wholesale's broadband, business data, voice and interconnect products give providers the foundation on which to build their own network or telecommunications services for their customers.

**For more information contact your Telecom Wholesale account manager or see [www.telecomwholesale.co.nz](http://www.telecomwholesale.co.nz) to find out more about becoming a customer.**

**[www.telecomwholesale.co.nz](http://www.telecomwholesale.co.nz)**

---