

Local Peering

Telecom Wholesale

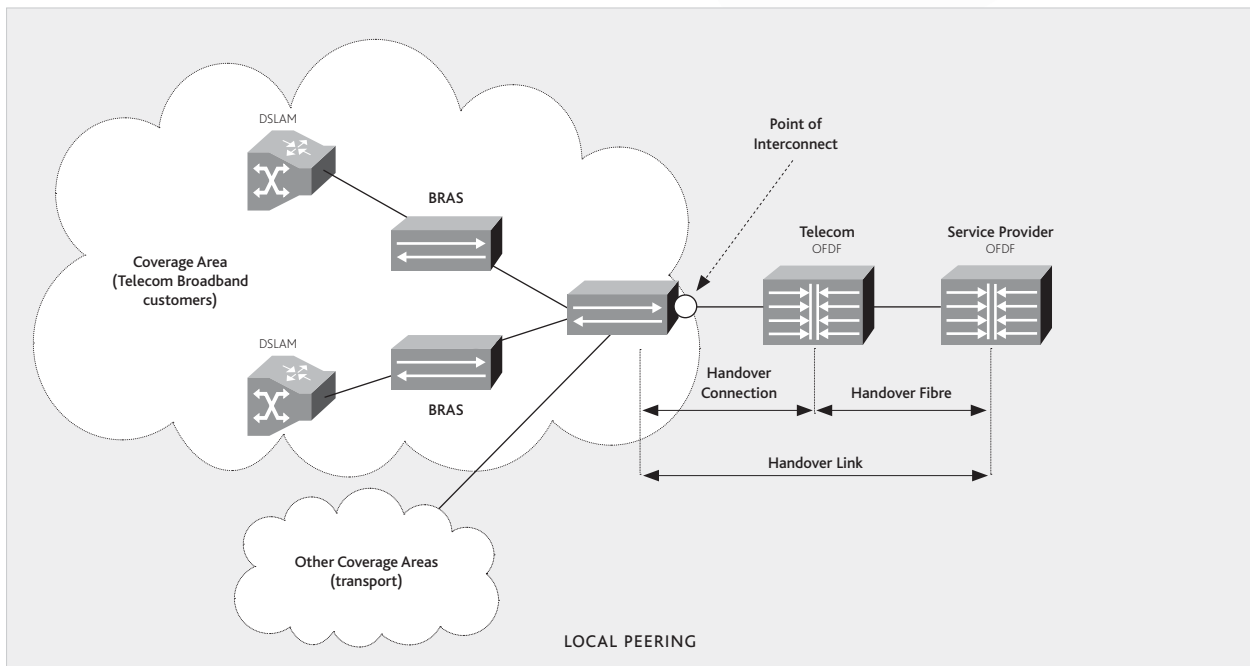
Local Peering offers multiple internet traffic points of interconnect (POIs) to service providers to allow them to interconnect with the Telecom network and exchange internet traffic locally between their end-users and Telecom Broadband customers.

Local Peering is for Internet Service Providers (ISPs), content providers, MUSH¹ network operators, and other Telecom Wholesale customers who wish to exchange internet traffic with Telecom Broadband customers.

Local Peering allows service providers to more effectively separate and manage their internet traffic, and to keep local internet traffic local rather than having to use a centrally routed, nationally priced service.

Local traffic is exchanged on a 'bill and keep' (no settlement payment) basis. A commercial transport service is also available to carry a service provider's non-local traffic to the appropriate coverage area.

Local Peering is delivered over Telecom's Ethernet platform and provides a high-speed service over Telecom's optical fibre.



¹ Municipals, Universities, Schools and Hospitals.

BENEFITS

The benefits of Local Peering for service providers include:

- No charge for local traffic exchange.
- Not carrying local traffic to a distant handover point and back again.
- Two transport charge options (Bandwidth and Usage).
- Transport pricing that is appropriate for the distance carried.

HOW IT WORKS

Local Peering is a Layer 3 service. Connectivity from service providers to Telecom customers within the coverage area is possible at Telecom Tier 2 sites. There are 29 Tier 2 sites and associated coverage areas around the country. Service providers that connect at a POI have access to Telecom Broadband customers associated with that POI, and are also able to access Telecom Broadband customers in other coverage areas by purchasing transport services from Telecom on the distance based pricing.

A Virtual Private Network (VPN) will be created for each catchment area that accepts IP routes from Broadband Remote Access Server (BRAS) routers that fall within the Tier 2 coverage area.

AVAILABILITY

Local Peering will initially be available at the Mayoral Drive, Wellington and Christchurch exchanges. Further roll-out will be driven by demand so service providers are asked to advise their account managers if they want to connect in a coverage area where Local Peering is not currently available.

The following traffic is included in Local Peering:

- Telecom Broadband
- Telecom Wireless Broadband
- Wholesale Broadband

Traffic not initially included:

- Corporate Internet Direct (CID)
- Global Gateway International (GGI)
- One Office
- Remote Office
- LLU Backhaul
- Telecom Dial-up
- Secure Business Internet
- Telecom Hosted applications
- School Zone
- Downstream GGI domestic
- Any customers with static IP addresses

REQUIREMENTS

Prerequisites:

The service provider must:

- Sign a Local Peering Agreement.
- Have a Handover Point within 5km of the Local Peering router.
- Be capable of terminating multiple Layer 3 VPNs as well as multiple BGP sessions.
- Have an Autonomous System (AS) number.
- Have a summarisable Public IP Address range assigned by APNIC.
- Have a NOC which operates 24x7 that:
 - Proactively monitors service provider maintained interconnection links.
 - Provides means by which to escalate and resolve network emergencies.
 - Is responsive to dealing with unsolicited email, Denial of Service Attacks and other security concerns.

FOR MORE INFORMATION

For more information contact your Telecom Wholesale account manager